

Mom Tri's



MOM TRI'S Villa Royale

12 Kata Noi Road, Kata Noi Beach, Phuket 83100 Thailand
Tel: +66 (0)76 333 568 E-mail: info@villaroyalephuket.com
www.villaroyalephuket.com



Information

Mom Tri's Villa Royale is a boutique hotel situated on a headland overlooking the Andaman Sea and the white sand beach of Kata Noi, adjacent to Kata Beach.

Villa Royale is the personal creation of renowned artist and architect Mom Luang Tridhosyuth Devakul, better known simply as Mom Tri, who is a descendant of King Mongkut Rama IV. Alluring glimpses of its distinctive Thai-style buildings, authentic Thai antiques and art, luxurious modern comforts, panoramic sea views and lush tropical gardens create an atmosphere of calm and tranquility. Forty-two suites rooms offer the highest standard of privacy and comfort in Phuket's last hideaway.

Distance to the beach : A few steps away.

Distance to Phuket International Airport : 45 km 60 - 70 min.

Distance to Phuket Town : 16 km 20 min.

Distance to Shopping : 5 min walk.

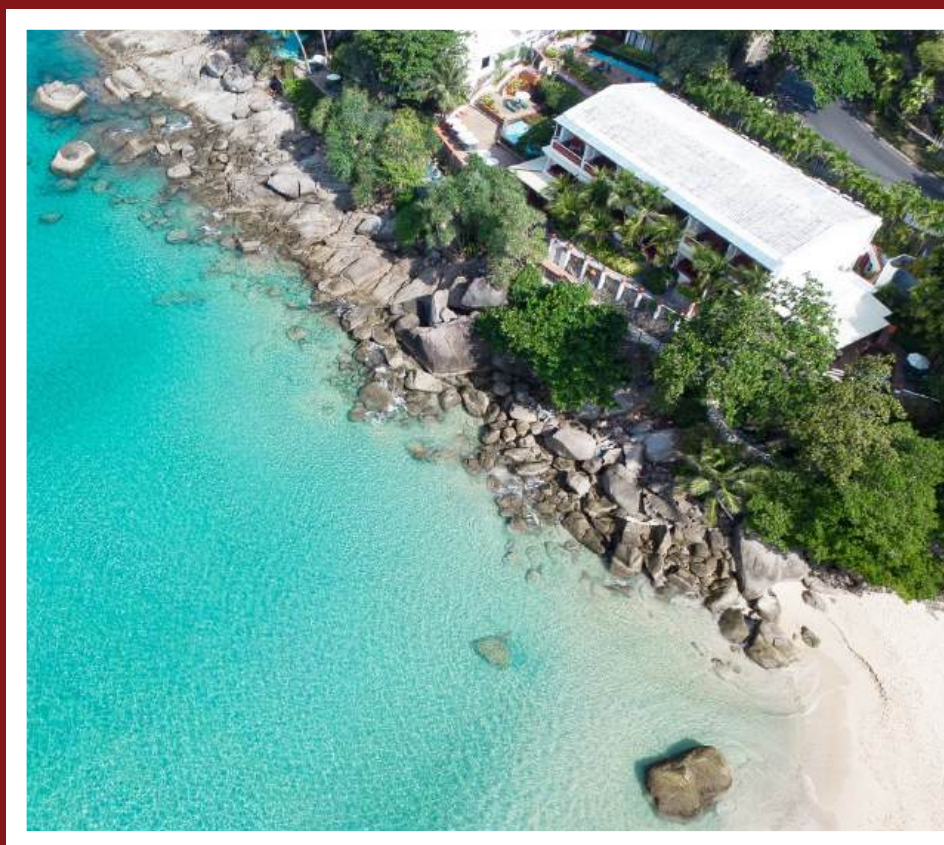
Landscaped into rocks overlooking the sea with a private path from the hotel leads to the sugar-white sand beach and the much desired-for turquoise sea of Kata Noi.

Accommodation: 42 Suites Rooms and 9 Types

- Royale Wing Suite (65 sqm.)
- Beach Wing Suite (64.5 sqm.)
- Penthouse Suite (70 sqm.)
- Ocean Wing Suites (61 sqm.)
- Ocean Wing Bordeaux (72 sqm.)
- Ocean Wing Bourgogne (115 sqm.)
- Kata Suite, pool access (57 sqm.)
- Pool Suite (207 sqm.)

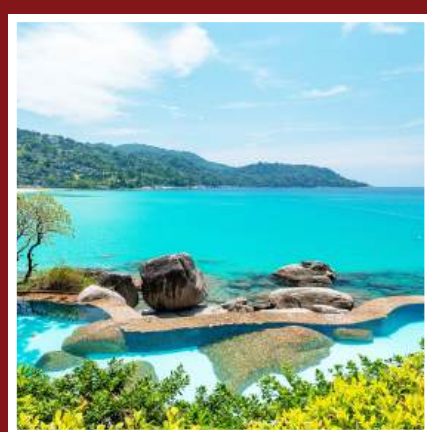
Classic suites

- Hong Song, Suite #2 (142 sqm.)
- Hong Sam, Suite #3 (135 sqm.)
- Hong See, Suite #4 (151 sqm.)
- Hong Haa, Suite #5 (100.5 sqm.)



Resort Features.

- Mom Tri's Spa Royale
- Two fresh water swimming pools (1 Extra at the Ocean Wing)
- One Natural Sea Water swimming pool
- Complimentary fitness center
- Library with quality books
- Internet access throughout the hotel
- Laundry service
- Wedding venue
- Gourmet restaurant "Mom Tri's Kitchen"
- Art Gallery
- Limousine and car rental arrangement
- Complimentary car park
- Baby sitting service
- Sea view bar Pool bar (only for in-house guests)
- Seashell and Veranda Lounge
- Complimentary snorkel, mask' fin (on request)
- Complimentary sun lounger and umbrella pool area
- Complimentary beach towel, beach mattress



Room and Suites Features.

- Contemporary Thai Decor
- Private balcony or terrace in each room
- Daily housekeeping service
- Wi-Fi
- In-room safe deposit box
- Room service until 21.30hrs
- Individual controlled air conditioning
- Full stocked minibar
- Coffee/Tea making facilities
- Complimentary drinking water
- Bathrobes and slippers
- Smart TV flat screen
- Cable with International program
- Turn down service
- Afternoon in-room complimentary snack
- Bathroom amenities (including a hair dryer)
- Iron/ ironing board (on request)
- Free baby Cot (on request)
- Oversized king bed
- Topper and various different pillows (on request)





MOM TRI'S Villa Royale

12 Kata Noi Road, Kata Noi Beach, Phuket 83100 Thailand
Tel: +66 (0)76 333 568 E-mail: info@villaroyalephuket.com
www.villaroyalephuket.com



Dining and Wining

Mom Tri's Kitchen capacity: 100 seats (In different zones)
Banquet capacity: 70 seats

Award-winning restaurant acclaimed by Wine Spectator, receiving the best of excellence. The restaurant is also recommended by many other sites such as TripAdvisor.

We serve both Traditional Thai Cuisine and an exceptional International cuisine uses only the freshest and finest ingredients.

Mom Tri's Kitchen also provides fascinating international breakfast for all hotel guests which can be enjoyed ideally with the view of the Andaman Sea from 07:00 to 10:30 hrs, daily.

Seashell Bar and Veranda Lounge, capacity: 18 seats

Including 16 wines by the glass, Champagne, cocktails, and beer are served in the bar and lounge overlooking the Andaman Sea. A perfect location to take in the sunset. Happy hour is from 18:00–19:00 hrs and includes selected wine by the glass.

- **Breakfast:** 07:00–10:30
- **Lunch:** 11:00–16:00
- **Dinner:** 17:00–23:00
- **Last Order:** 22:30

Spa

Mom Tri's Spa Royale is located in a lush tropical garden. Masseuse therapists apply the ancient knowledge to natural Thai remedies to balance the body and calm the mind.

Opens at 10:00–19:00

Green and environmentally conscious

- Collect rainwater for use in irrigation/watering
- Glass bottles in rooms and for meals
- Water from pitchers during meals (coming from large reusable bottles)
- Recycled wine bottles in the pagoda sculpture
- Recycle our used cooking oil — pass it on for biodiesel
- Organic produce from Mom Tri's PTIS International School & Learning Community organic farm
- Organic produce from the King's Royale Project Foundation
- Leftover food donated to a pig farm
- Restaurants are open-air and use no air conditioning
- Rooms have energy-saving light bulbs
- Shampoo and conditioner are organic and contain no sodium laurel sulfate
- Bottles of amenities are refilled and ceramic, in many cases
- Individual water heating system per room
- Waste water never into the ocean, treated and sent to municipality
- Many natural features in the hotel were incorporated in the design, rocks in pool, dining area, and wine cellar.
- Natural compost used in the garden
- Recycle paper, newspapers, magazines and print cartridges
- Boxes from suppliers such as cardboard recycled
- Option for guest to re-sue their towels and sheets more than once
- Saltwater pool using filtered seawater
- Use of local produce and meats as much as possible instead of imported
- Use of seasonal produce in the restaurant





MOM TRI'S Villa Royale

12 Kata Noi Road, Kata Noi Beach, Phuket 83100 Thailand
Tel: +66 (0)76 333 568 E-mail: info@villaroyalephuket.com
www.villaroyalephuket.com

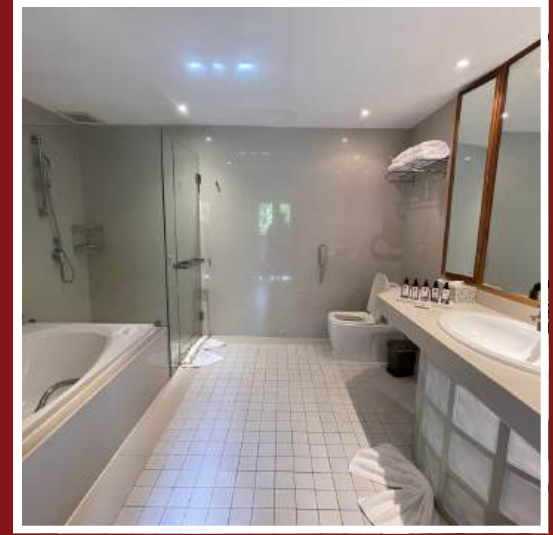


Room Categories

Royale Wing Suites (9 Units)

Size : 65 square meters

View : Facing the sea with partial sea views
Description : Built in 2009, suites are spacious and contemporary with an open plan sitting room and an extra large king-sized bed. All rooms have a large balcony with a ceiling fan and two lounge chairs facing the sea. A large bathroom has an oversized bathtub and separate shower.

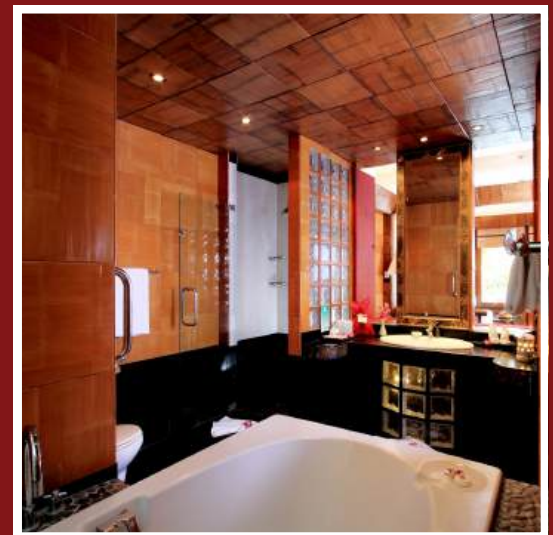


Beach Wing Suites (17 Units)

Size : 64.5 square meters

View : Panoramic sea view

Description : Spacious, Thai-style décor suite with an open plan sitting room and an extra large king-sized bed. All rooms have a private balcony or terrace facing the sea. The bathroom has an oversized bathtub and separate shower.



Location : In one of 2 low-rise oceanfront buildings, accessible by a short set of steps.

Penthouse Suites (3 Units)

Size : 70 square meters

View : Panoramic sea view

Description : Built in 2013, suites are spacious and contemporary with an open plan sitting room and an extra large king-sized bed. Suites have connecting doors, ideal for families. All rooms have a very large balcony with a ceiling fan and two lounge chairs enjoying sea views. A large bathroom has a Jacuzzi bathtub and separate shower.



Location : Adjacent to reception, in the Royal Wing

Kata Suites (2 Units)

Size : 57 square meters

View : Partial sea views

Description : A pool-access studio with an extra large king-sized bed, sitting area and office nook. A spacious bathroom has a separate shower and bathtub. Entry is through an ample terrace which opens directly onto the upper swimming pool.



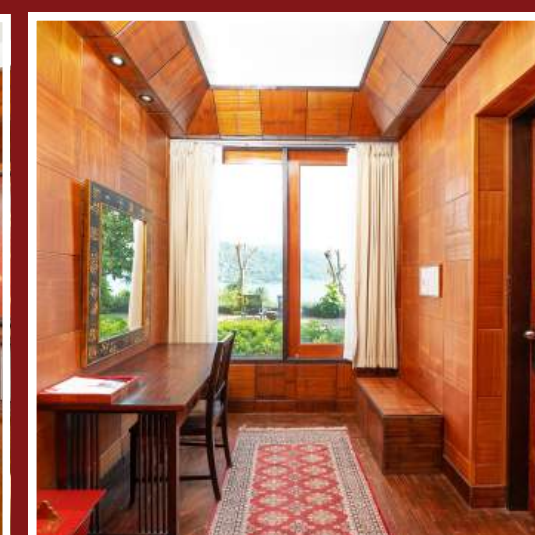
Location : Pool access suite located in the same building of the Beach Wing suites

Pool Suite (1 Unit)

Size : 95 square meters

View : Panoramic sea view

Description : Our most exclusive suite. A spacious suite with an open floor plan comprised of a living area and oversized-king bed. The generous bathroom has a separate shower and large bathtub. A private pool (3 x 5.5 m) faces the oceanfront and enjoys views of Kata Noi Beach. The suite is equipped with an Illy coffee maker and Ipod dock.



Location : Closest to the beach and in the same building of the Beach Wing Suites



MOM TRI'S Villa Royale

12 Kata Noi Road, Kata Noi Beach, Phuket 83100 Thailand
Tel: +66 (0)76 333 568 E-mail: info@villaroyalephuket.com
www.villaroyalephuket.com



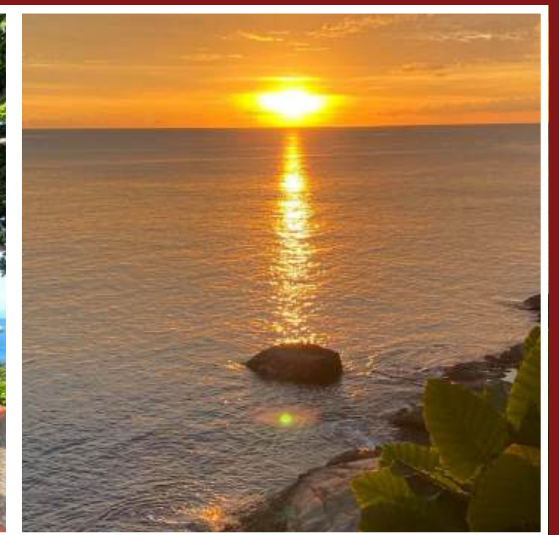
The Ocean Wing

The Ocean Wing is in a separate, private wing just 50 meters from the main hotel, on the water's edge and with stunning sea views. It offers privacy, tranquillity and seclusion in lush tropical scenery. An internal private path links the properties and provides direct beach access through the main hotel.

This wing has its own infinity pool, sunset terrace and Mom Tri's private art collection and personal creations. Winding paths lead through mature gardens to sun decks with two loungers situated on the rocks at the water's edge. for the Ocean Wing guests only.

There are only 6 suites in total and guests enjoy all of Villa Royale amenities and renowned service. Also guests can choose a continental breakfast served on the terrace, or the Royale breakfast buffe

Children under 12 yrsr not permitted



Ocean Wing Suites (4 Units)

Size : 61 square meters

View : Panoramic sea view

Description : Set in exclusive surroundings, these suites offer privacy, tranquillity and seclusion. Suites feature an open floor plan with an oversized king bed, desk and sitting area. Bathrooms are spacious and have a shower

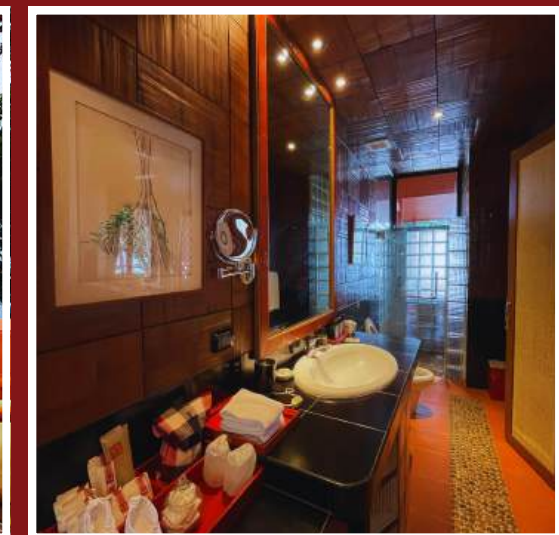


Ocean Wing Bordeaux (1 Unit)

Size : 72 square meters

View : Panoramic sea view

Description : This one of a kind suite offers privacy, tranquillity and seclusion. There is an outdoor rainwater shower, day beds, table and ceiling fan on the balcony. The suite has a separate bathtub and shower and is equipped with an Illy coffee maker.



Ocean Wing Bourgogne (1 Unit)

Size : 115 square meters

View : Panoramic sea view

Description : This one of a kind suite offers privacy, tranquillity and seclusion. The suite features a Jacuzzi bathtub and separate shower room, 2 bathrooms and a kitchenette. The suite is equipped with an Illy coffee maker and iPod dock. The living room and bedroom share an open floor plan, and feature a large optional divider. There is a large terrace with two day beds and a ceiling fa





MOM TRI'S Villa Royale

12 Kata Noi Road, Kata Noi Beach, Phuket 83100 Thailand
Tel: +66 (0)76 333 568 E-mail: info@villaroyalephuket.com
www.villaroyalephuket.com



Classic Suite

Once the former home of Mom Tri's, these suites retain their classic charm and Thai decor. Built into a gentle hillside each suite is on its own level and has a spacious terrace. Suites 1-3 enjoy lush garden views, and partial sea views from the terrace suites 4 and 5 enjoy panoramic sea views.



Suite #2 Hong Song (1 Unit)

Size : 142 square meters

View : Garden view and ocean glimpses from the terrace

Description : Connecting sitting room and bedroom with 2 queen beds. Each room has a separate entrance with access to a private terrace with a plunge pool, surrounded by a lush garden. The suite is equipped with an Illy coffee maker and Ipod dock.



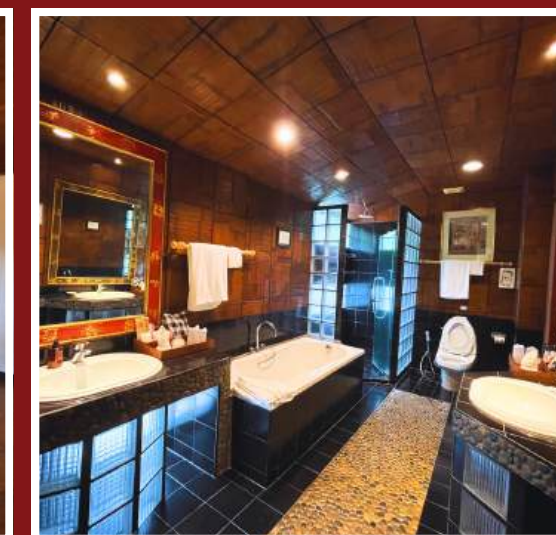
Suite #3 Hong Sam (1 Unit)

Size : 135 square meters

View : Garden view and a sea view from the private terrace.

Description : Connecting sitting room and bedroom with a double bed. Each room can be entered from outside.

Bathroom has a separate bathtub and shower. A spacious, private terrace has lounge chairs and a Jacuzzi for two people. The suite is equipped with an Illy coffee maker and Ipod dock.



Suite #4 Hong See (1 Unit)

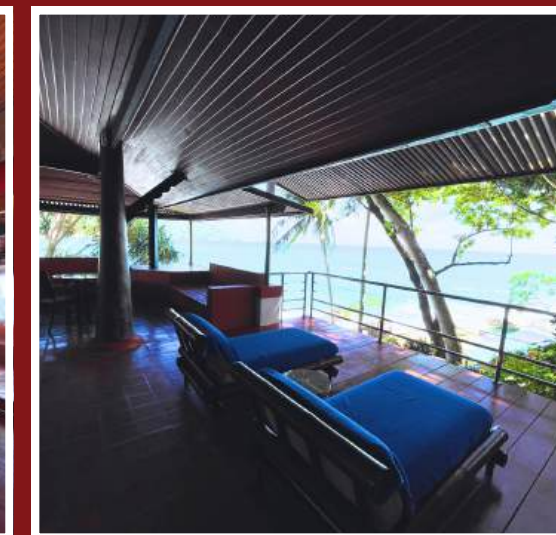
Size : 151 square meters

View : Panoramic sea view

Description : The largest suite available comprised of a sitting room and bedroom with an extra large king-sized bed. The living room has floor to ceiling windows facing the oceanfront and an ample terrace with two lounge chairs.

A spacious bathroom has a separate shower and bathtub.

The suite is equipped with an Illy coffee maker and iPod dock.



Suite #5 Hong Haa (1 Unit)

Size : 100.5 square meters

View : Panoramic sea view

Description : Open floor plan studio with an extra large king-sized bed, office area and sitting area. A spacious bathroom has a separate shower and bathtub. An ample terrace has a Jacuzzi for two people, two lounge chairs and sitting area. The suite is equipped with an Illy coffee maker and iPod dock.

